



2" IC LED NEW CONSTRUCTION RECESSED CAN SPECIFICATION SHEET

SKU: A2/LED/IC/AT(BOXLESS)

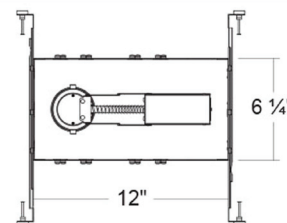
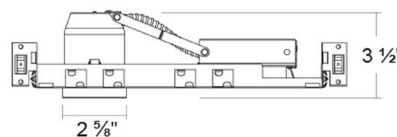
FEATUERS

- 2" LED Recessed Housings suitable for New Construction and Re-model in residential and commercial applications.
- Type IC / Air-Tight Galvanized steel plaster frame with J-Box and captive hanger bars.
- LED Driver is mounted directly on housing.
- Accesible to LED Driver from the opening of housing.
- Compatible with most of the standard incandescent or magnetic / electronic low voltage dimmers.



SPECIFICATIONS

- ≥ 80 or ≥ 90 CRI
- Accommodates 120 volts AC at 60Hz
- Dimmable with most standard incandescent, magnetic low voltage and electronic low voltage dimmers.
- 2700K, 3000K, 4000K, 5000K available
- 120V (Triac dimming) or 120/277V (0-10V dimming).
- Long life LED chips guaranteed up to 50,000 hours.



LISTINGS

- cULus Listed
- Energy star qualified
- Wet loactions(Not suitable for coastal/salt water area)
- Damp locations
- RoHS compliances
- Tested in accordance with IESNA LM79 & LM80
- Meets state of California title 24 requirement



| | |
|---------------|--|
| Project: | |
| Contact: | |
| Location: | |
| Fixture Type: | |

| Quantity | Notes |
|----------|-------|
| | |